

IKIA 3 & 4 STAR HOTEL

Total Area: 55'000 m²

Architect: Shiva Aghababaie



EPC By:



Tarh va Afarinesh
Architectural & Engineering Consultants

2011-2015

Ibis – Novotel (IKIA)

As first airport hotel in Iran, IKIA 3 & 4 Star hotel is developed on a land of 23'000 m² opposite main passenger terminal of Tehran's Imam Khomeini International Airport as a part of newly developed airport cities positioned 35 km to southwest of Tehran.

Hotel is designed as a cluster of a 3-Star hotel with 196 rooms and a 4-Star hotel with 296 rooms making total area of 55'000 m², with common service areas, but separated guest and public areas. The public areas are connected through a corridor linking lobbies. Building has 12 levels: 2 basements for parking, service, and back of house areas; 2 levels for public areas, including lobbies, 3 restaurants, coffee shops, ballroom, meeting rooms, crew lounge, playground, and men & women health-centres; a mezzanine for service and admin areas; and 7 guest floors. Guestrooms are designed as per standards of an international hospitality group.

Design Description

At a first glance this design is the emergence of colours in Iran's modern architecture; and the designer, courageously going beyond the conventional use of neutral colours in 3 decades of Iranian contemporary architecture and challenging the eyes by bright green, purple, red, and yellow colours, has opened up a new episode in harmony and disharmony of colours in architecture.

Looking closer, the building is manifest of its creator. The designer, concerned about vitality and afraid of turning into a swamp brings shape, form, and light into a frenzied dance; and these elements are merged in their dance in a way that no sign of lethargy remains in the building. The floral motives, standing still for centuries on the Persian carpets and walls of the mosques, tend to move and ascend around a pole of light towards the sky.

Philosophy of unity and diversity is artfully imaged



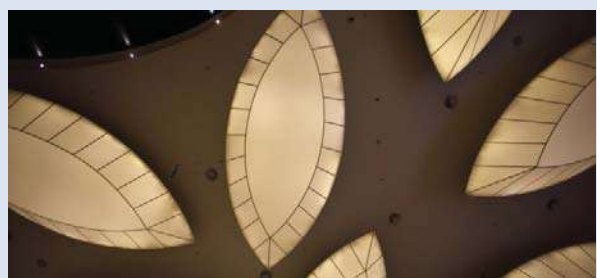
in this building. Each part of the building has its exclusive design based on the intended function; yet all diverse areas are merged like knots of an Iranian carpet to form a body, a journey from complexity of mysterious Iranian architecture to transparency of the modern architecture.

Architect's Approach

As architect of this project, I would like to call this work of art "Rise of the Colors". I have always loved to design hotels; places when people come and go joyfully. They are full of movement, joy, love, and energy. It is so pleasant looking at people enjoying the spaces I have created. They use all those spaces and corner which I have designed. Many of them apprehend the love concealed in my design beyond the spaces and surfaces; and I see this in their looks, in their happiness, in their joy of drinking a cup of tea, and when they touch the finished surfaces; and this is the treasure of my life. And this hotel; the first airport hotel in Iran, the first building which all those entering my country shall see! As usual, I move the pen on the paper, free from all the conventions and schools, and regardless of the limited constructions technologies and availability of the materials. Iranian motives extended to large scales are fine enough; yet I utilize the light and now the patterns of Iranian carpet shows off amongst the tiers of cutting edge materials and catch the viewers' eyes.

This is not enough for me! I want to use colors, as did the architects of the old times. They used as much as they could of turquoise and ochre colors on highest spots of the cities above the domes. I want to go beyond this boring and grayish architecture, and I use blue, yellow, and red lights to create an eye catching disharmony emerging the Iranian patterns. I want not to fear from this combination and I continue the same line to the landscape with blue colors, red planters...

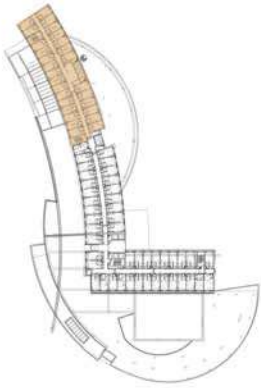
To me the airport hotel is "Rise of the Colors". Pink, yellow, purple, and green colors show off boldly on the large surfaces amongst the white and black colors and scream my hopes and wishes for a better future of my people and my homeland; the hopes and wishes which I weave like treads of a carpet in the concept design. Am I able to weave hope and light into the lives of my people? I see



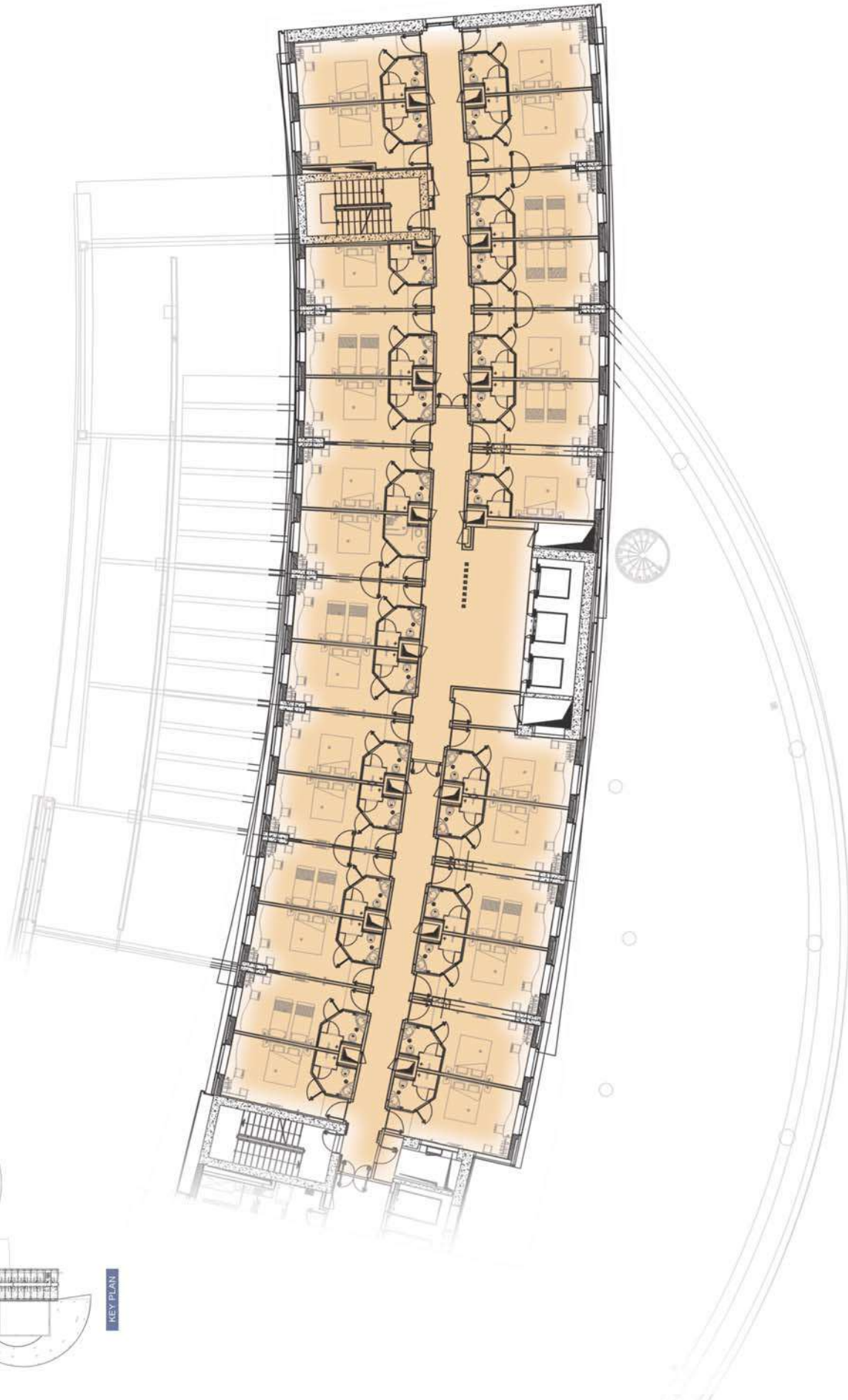
that everyone entering the building is smiling and apprehends my love through the surfaces, motives, and layers. This is a different sparkle of hope; the hope for our dreams to come true and for us to reach the place we deserve.

In the Iranian restaurant I ascend the patterns of the Iranian carpet from the ground to the ceiling. Are we able to go up again? I trust we can! The colors have risen in my life and in my people's lives; and I have pictured this in every corner of this work: "Raise of the Colors".

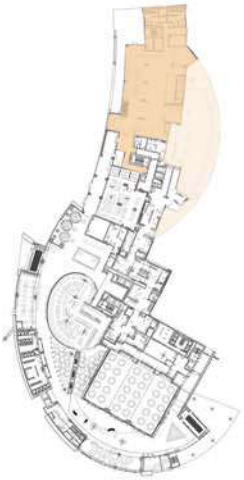




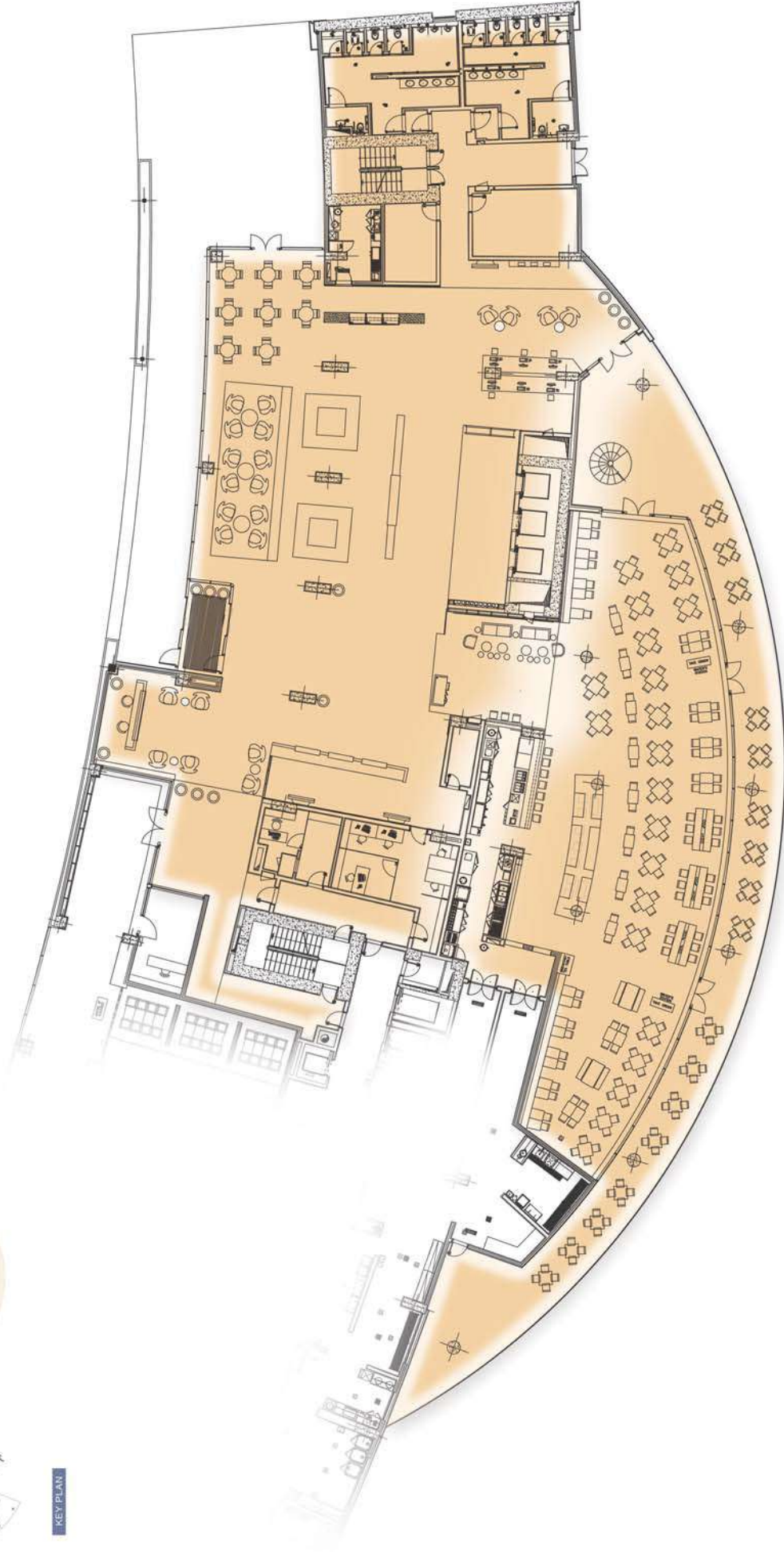
KEY PLAN



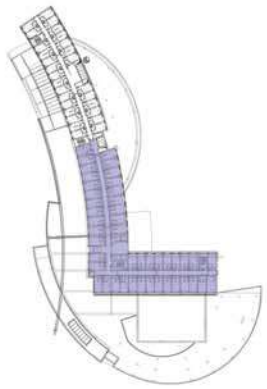
AXIS HOTEL GUEST FLOOR : TOTAL AREA = 904.5 m²



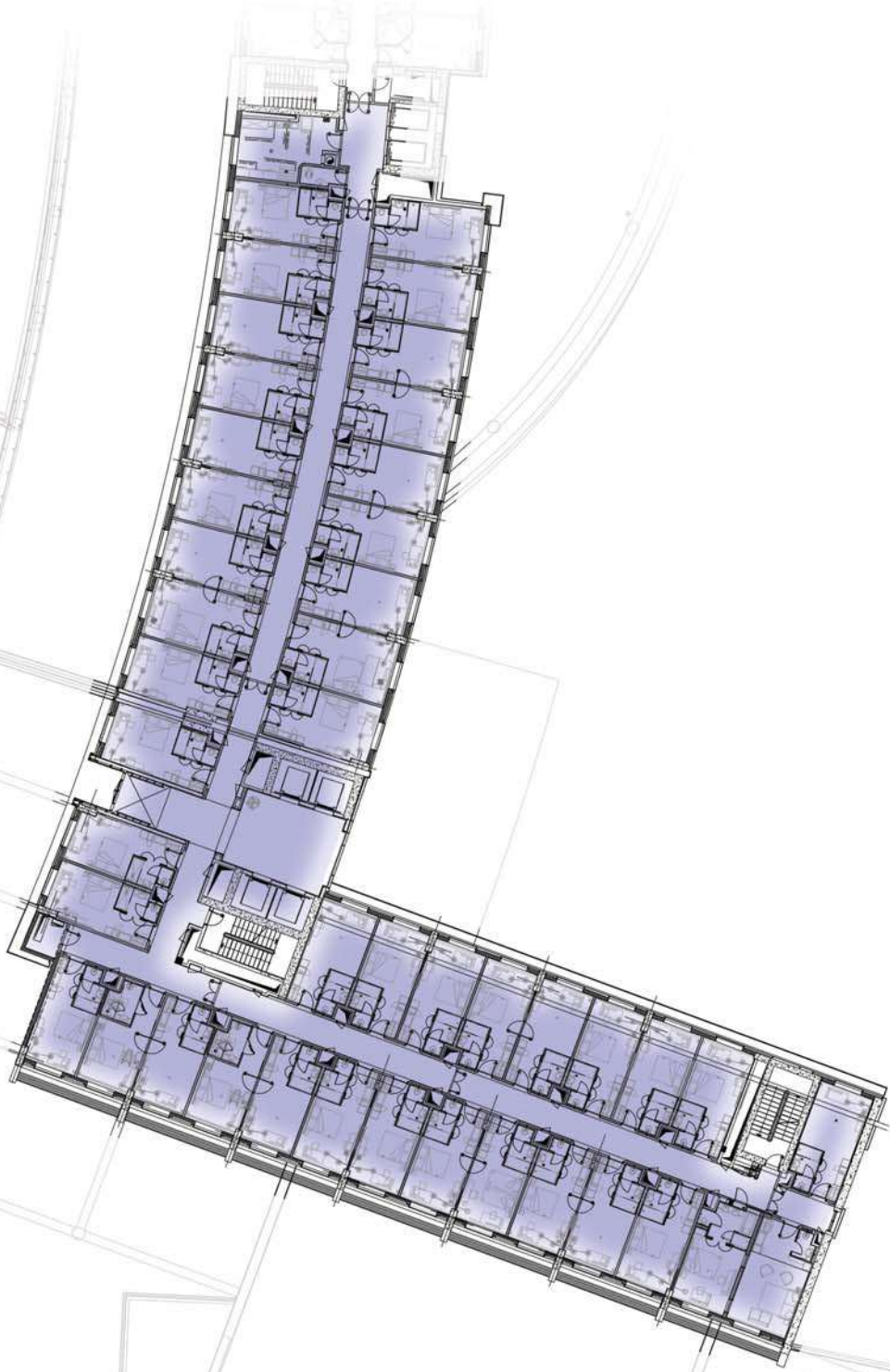
KEY PLAN



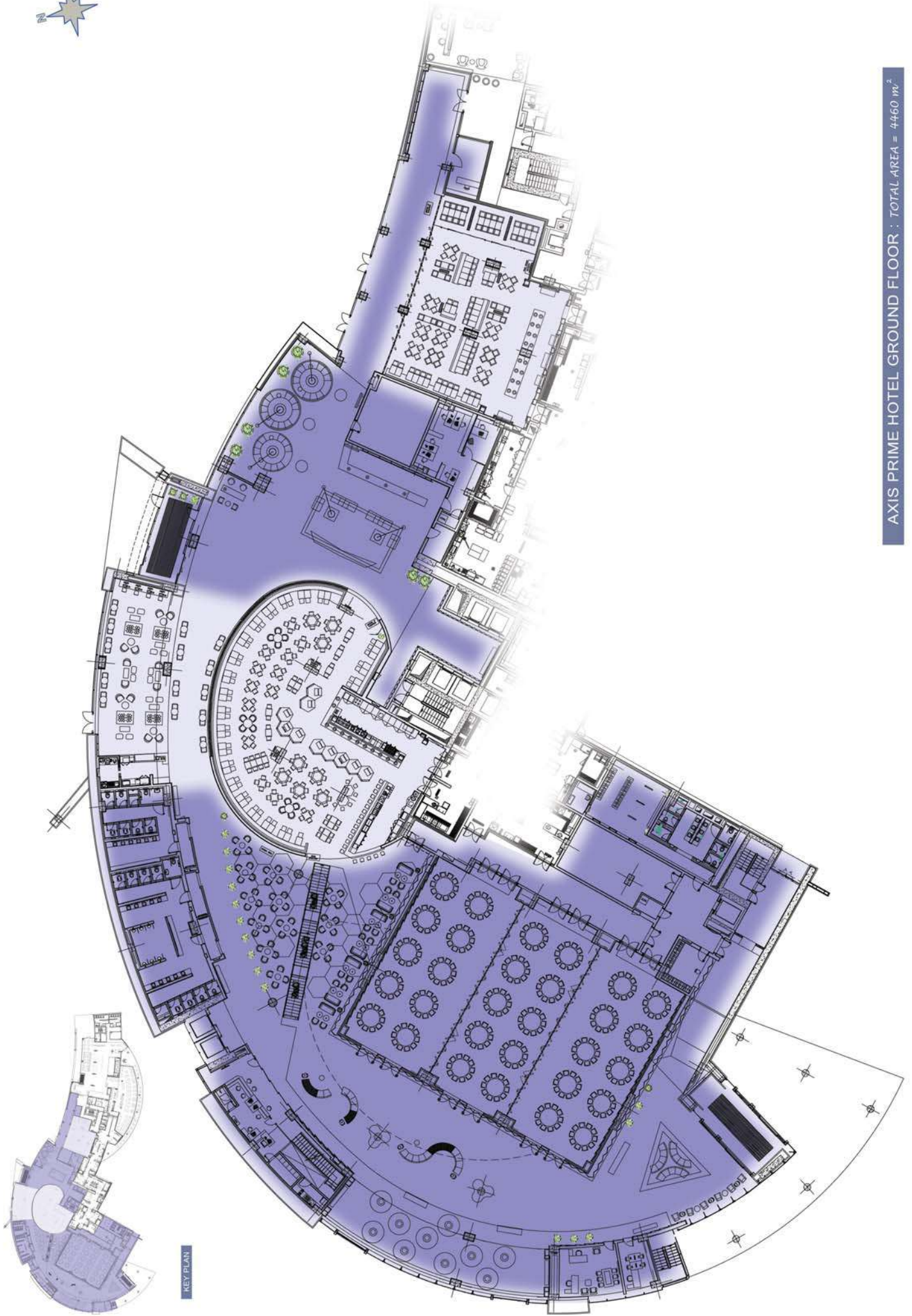
AXIS HOTEL GROUND FLOOR : TOTAL AREA = 1915 m²



KEY PLAN



AXIS PRIME HOTEL GUEST FLOOR : TOTAL AREA = 1817.5m²



KEY PLAN

AXIS PRIME HOTEL GROUND FLOOR : TOTAL AREA = 4460 M²